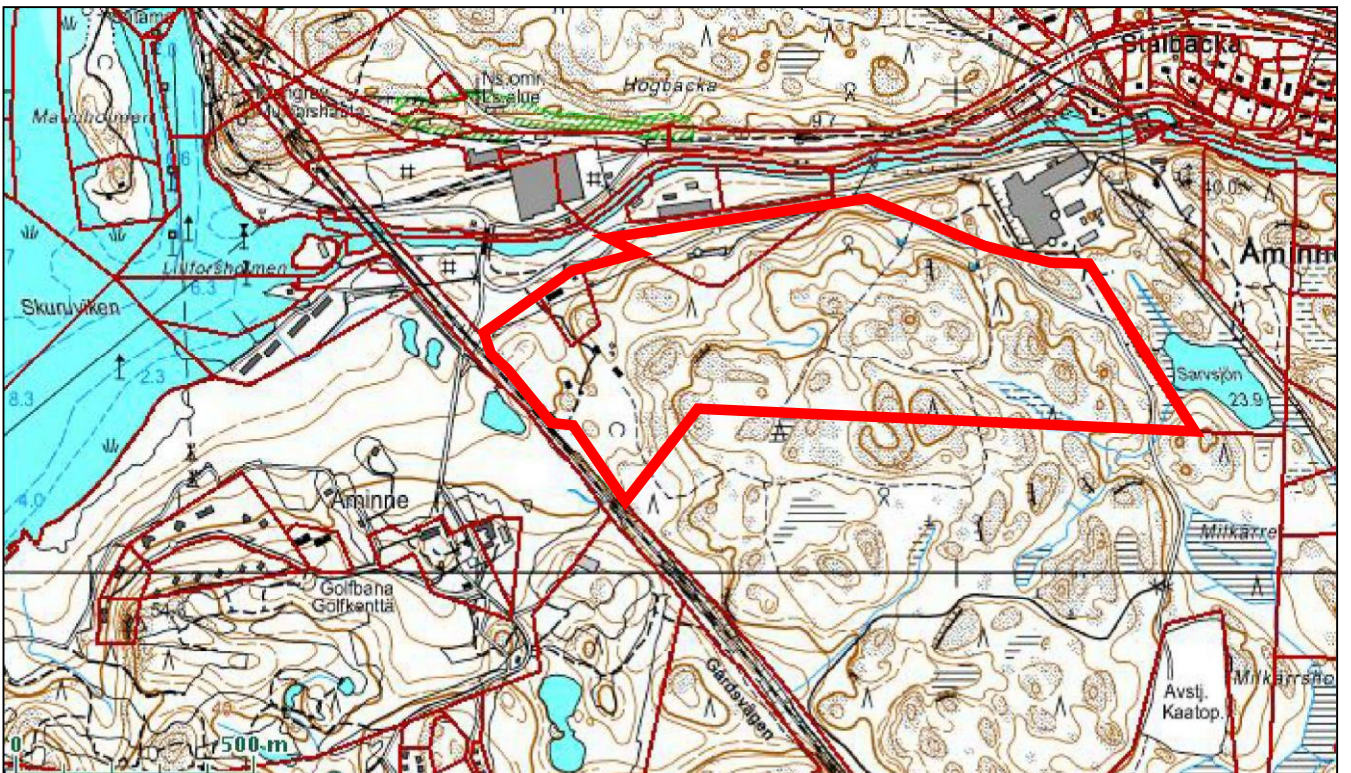
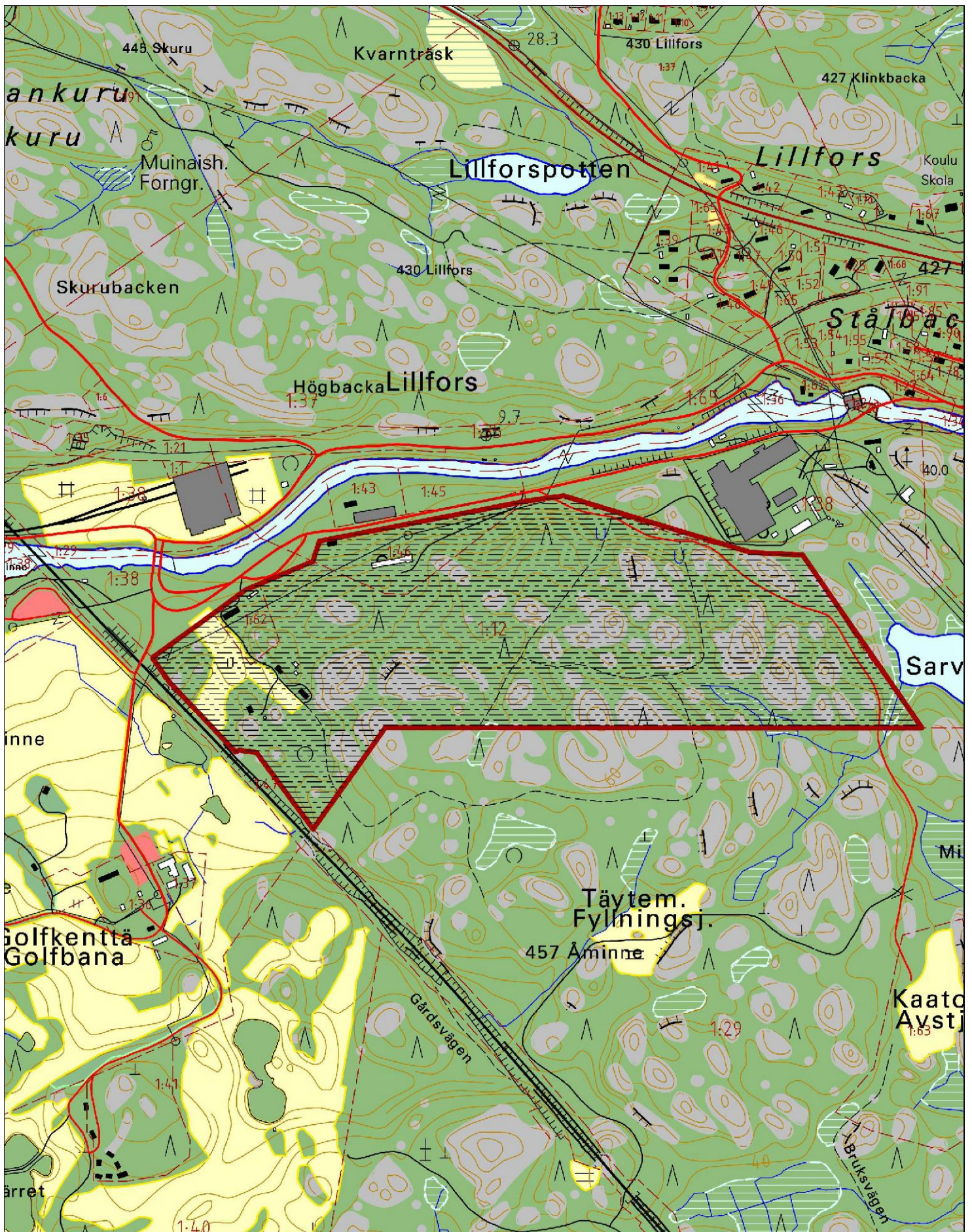


250 m

Opaskartta, (c) Raseborg stad & MML, lupanro 913/MML/07



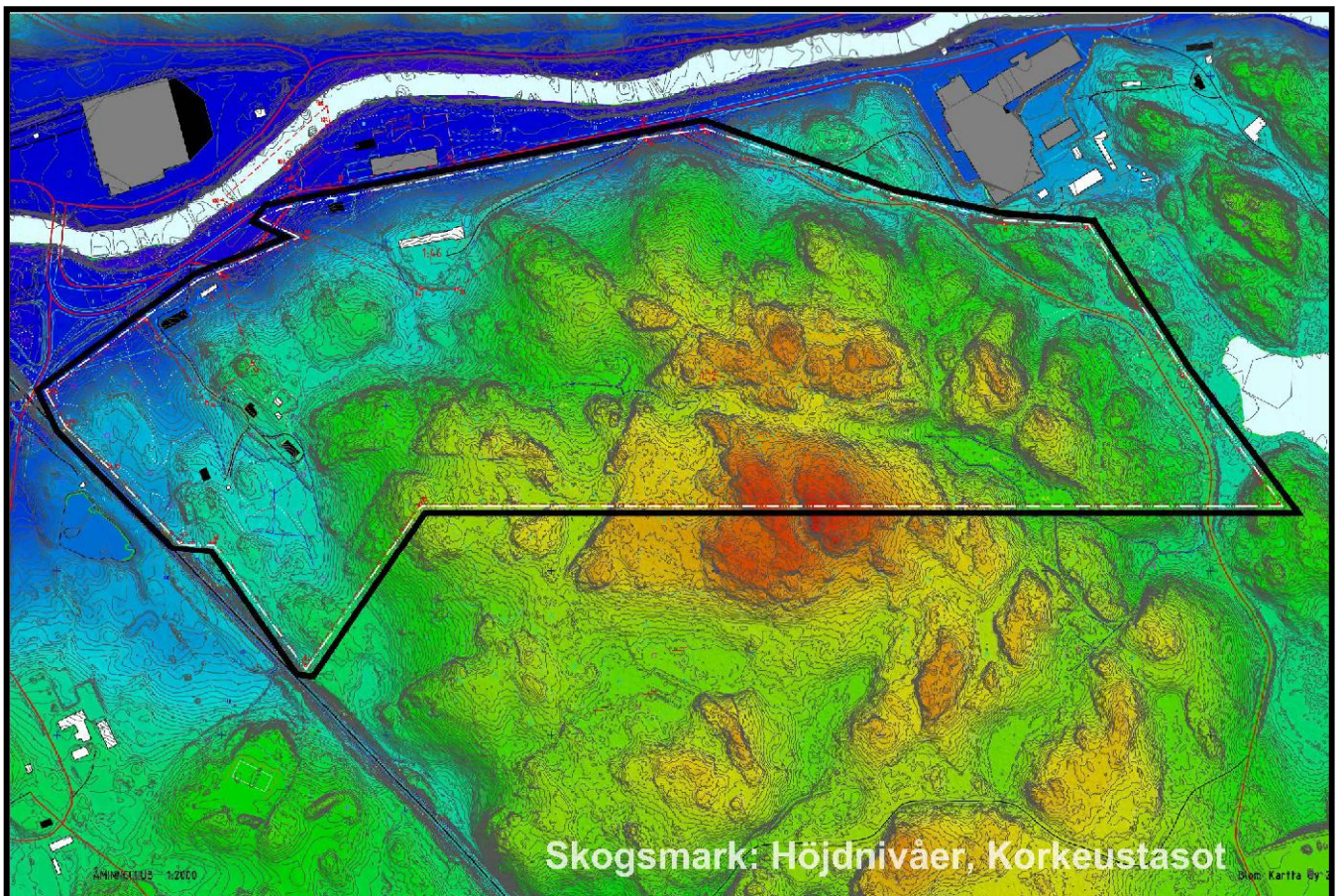
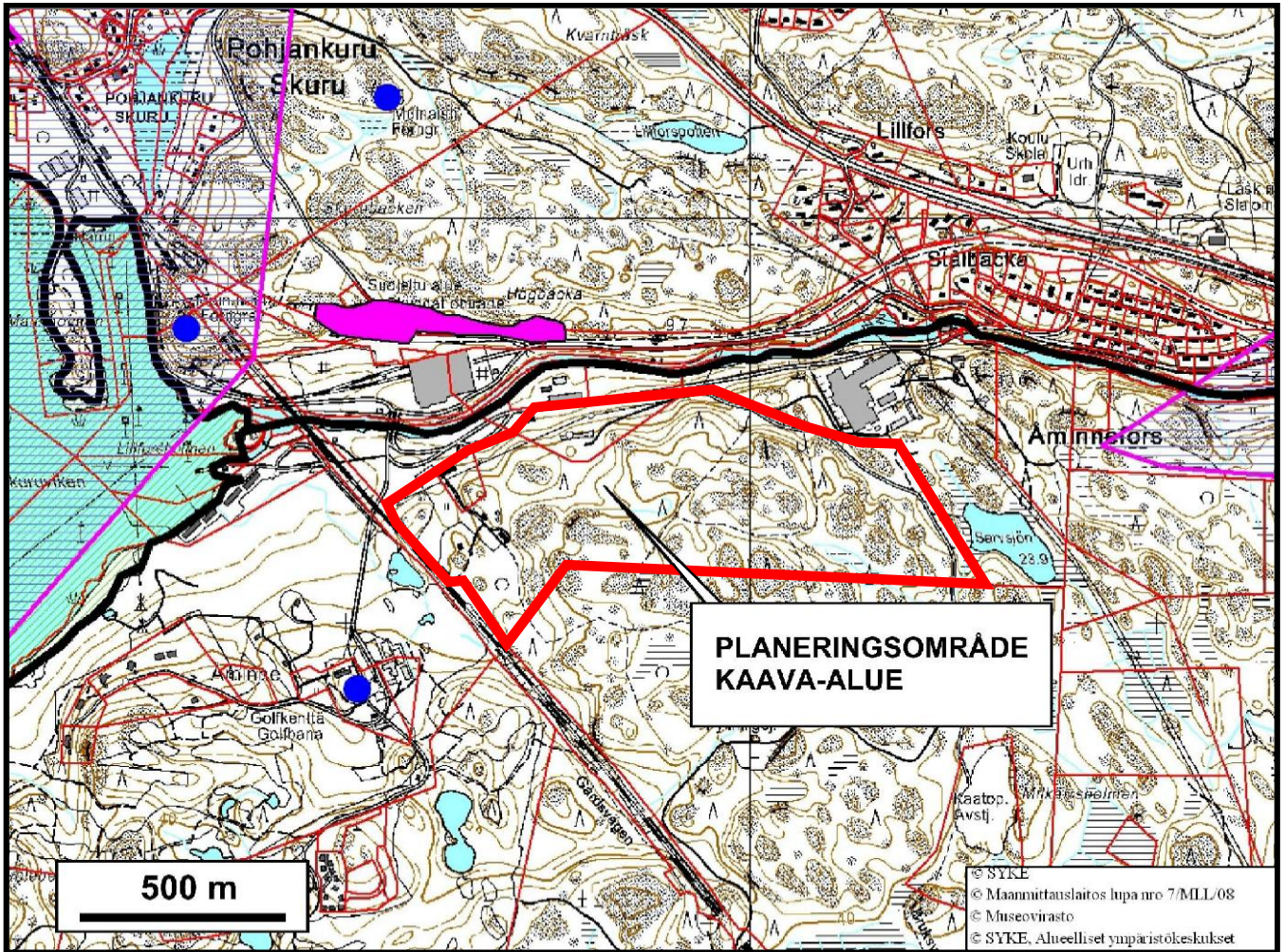
BILAGA / LIITE 1A

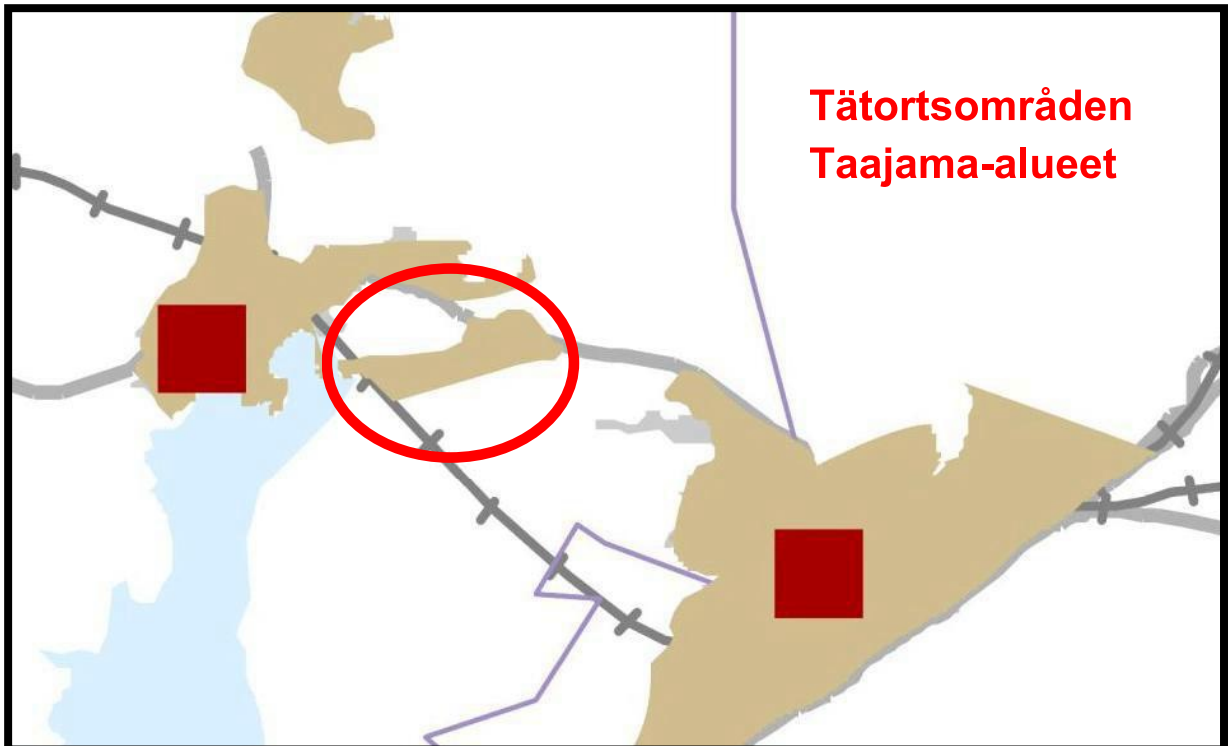
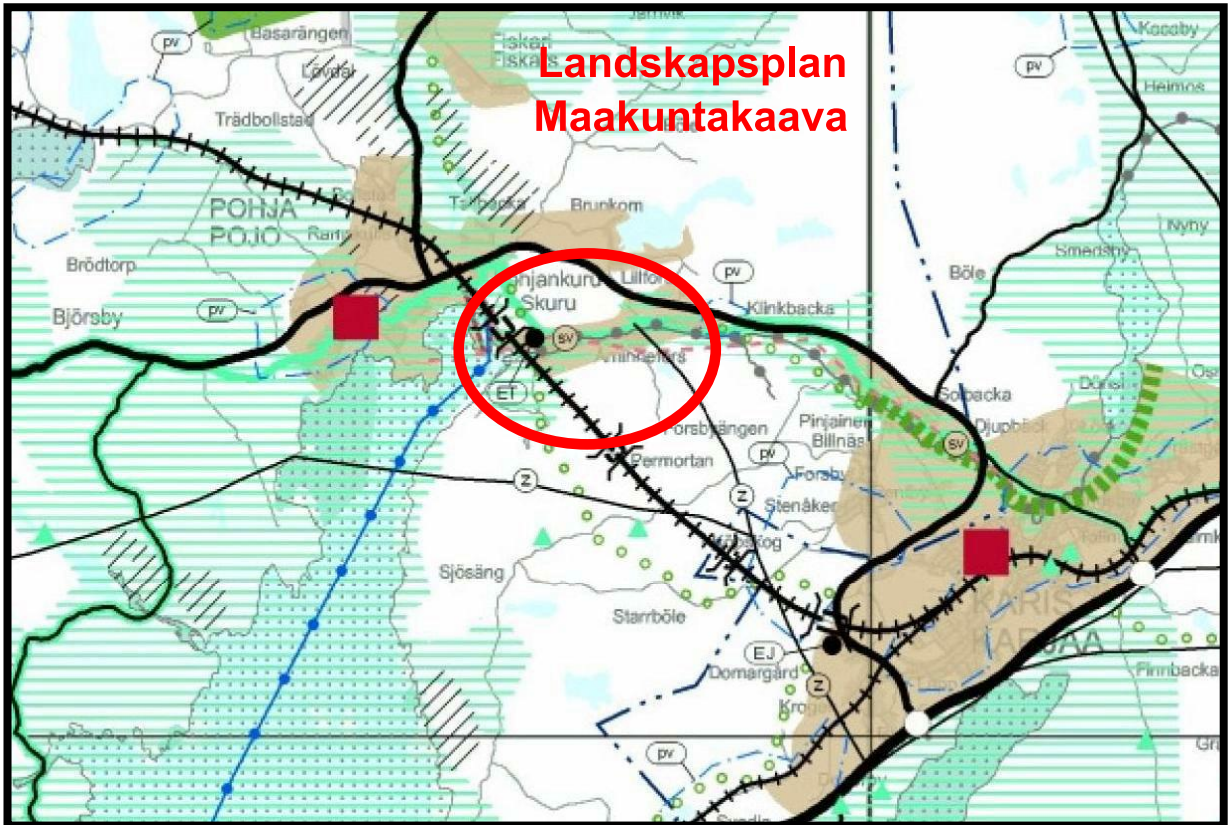


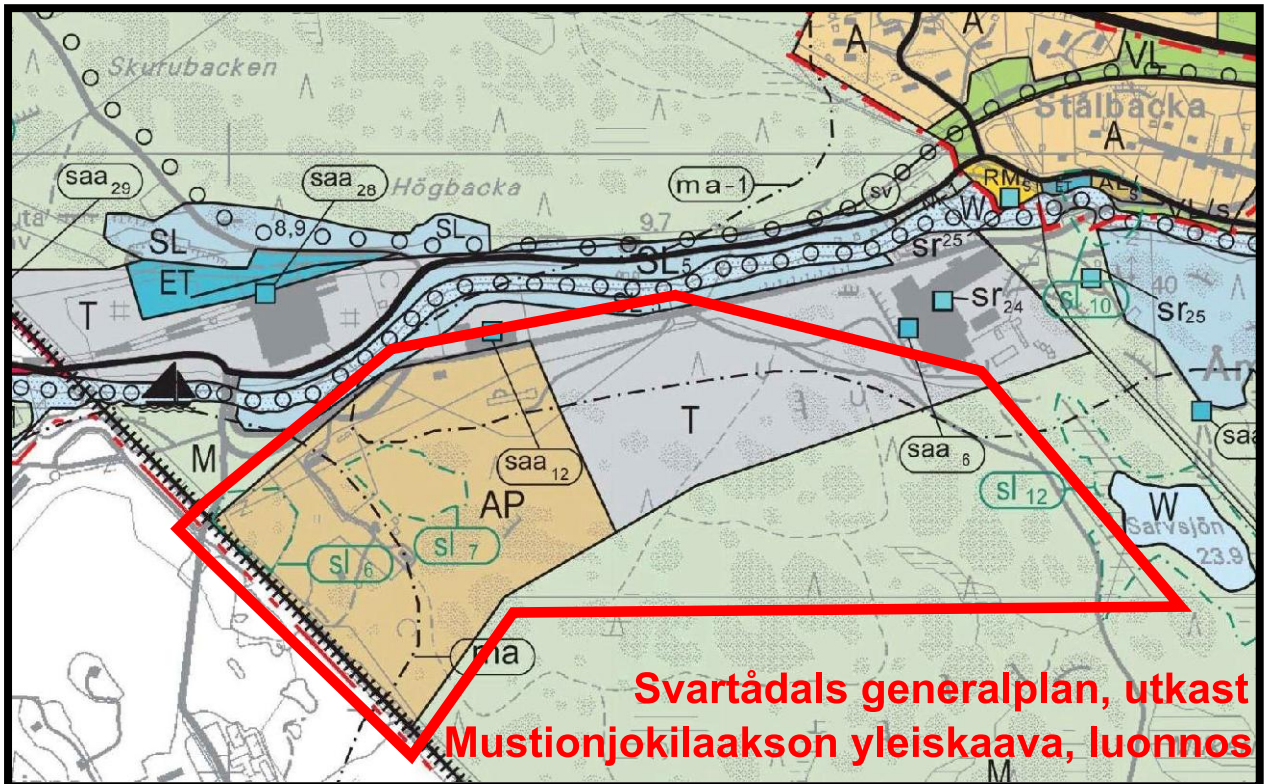
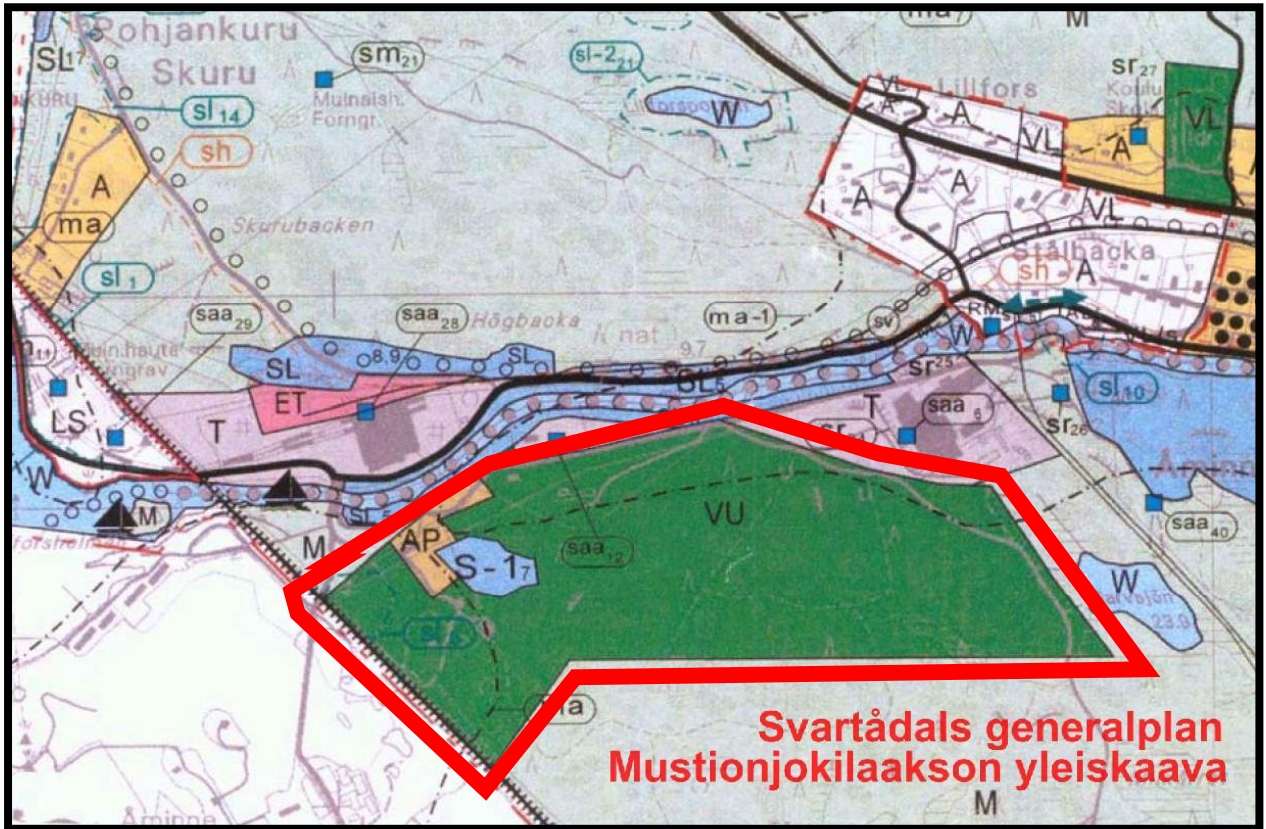
**PLANERINGSOMRÅDE,
KAAVA-ALUE**

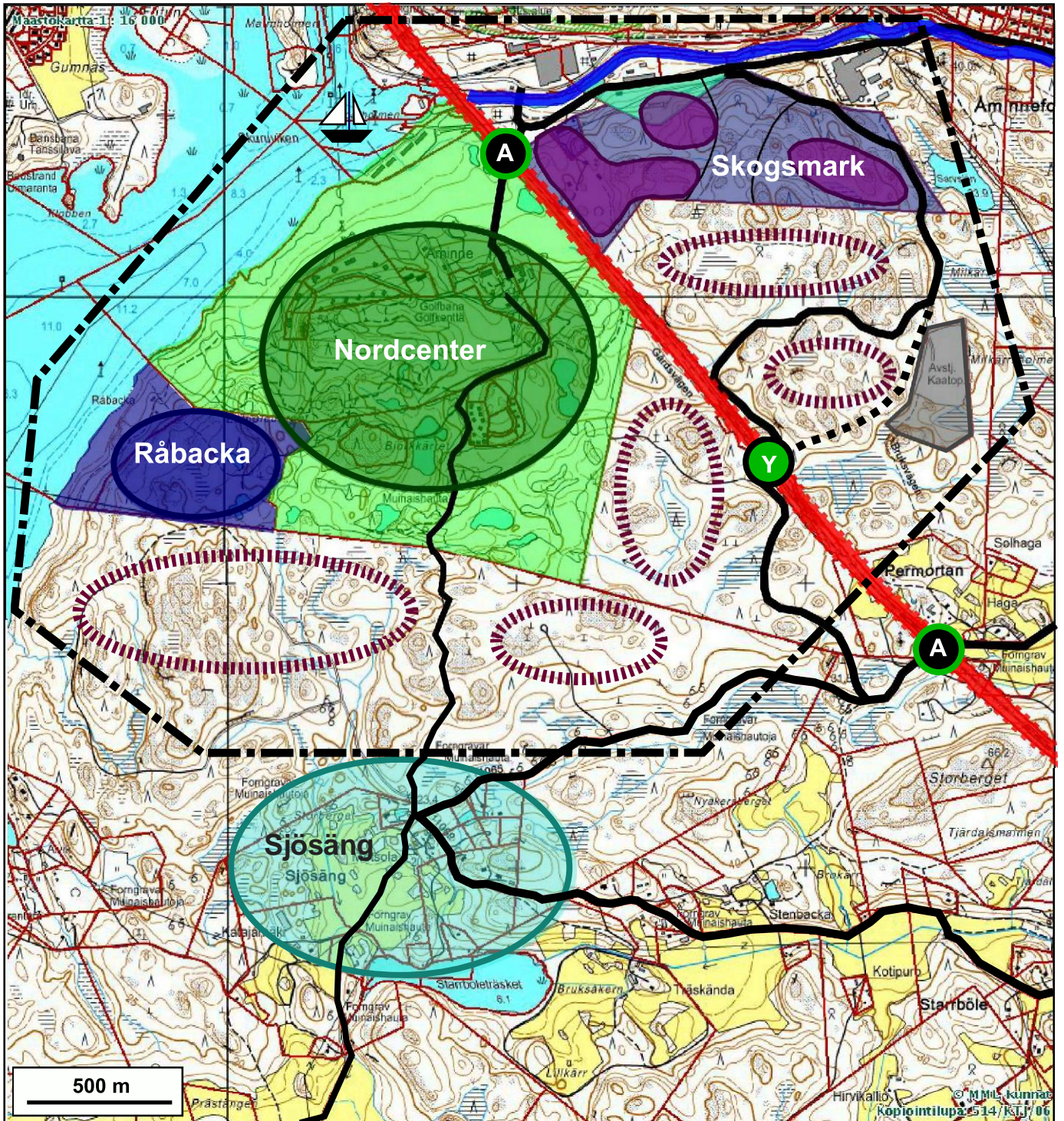
**LÄGE, SIJAINTI
BILAGA,
LIITE **1B****

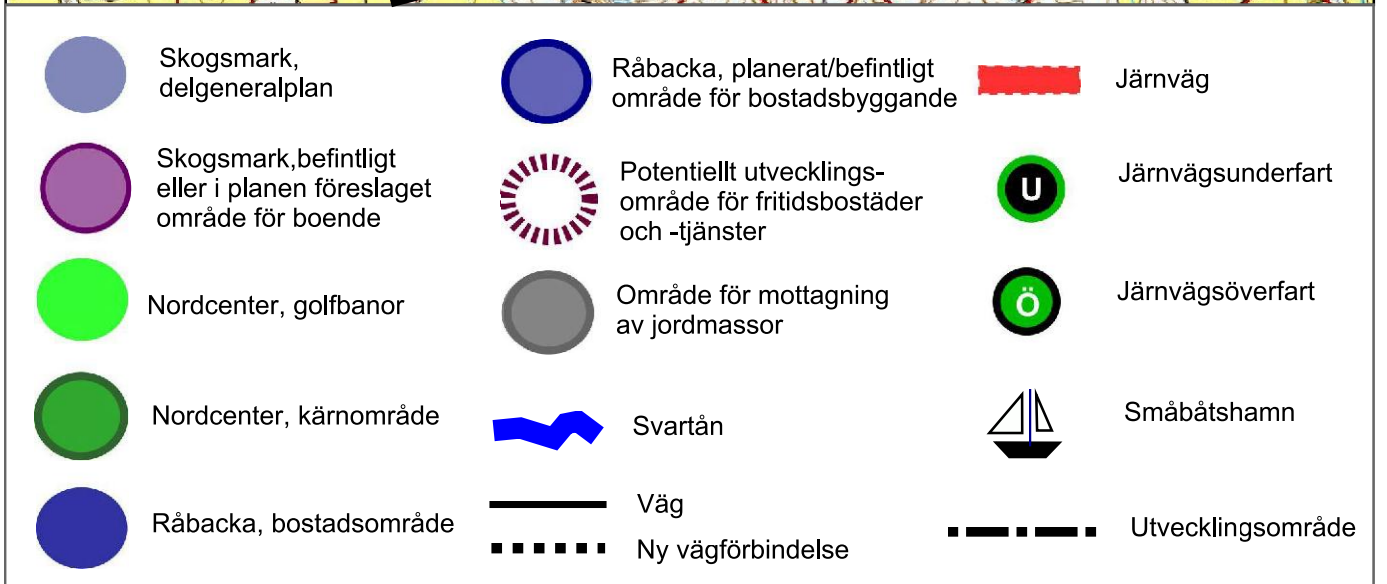
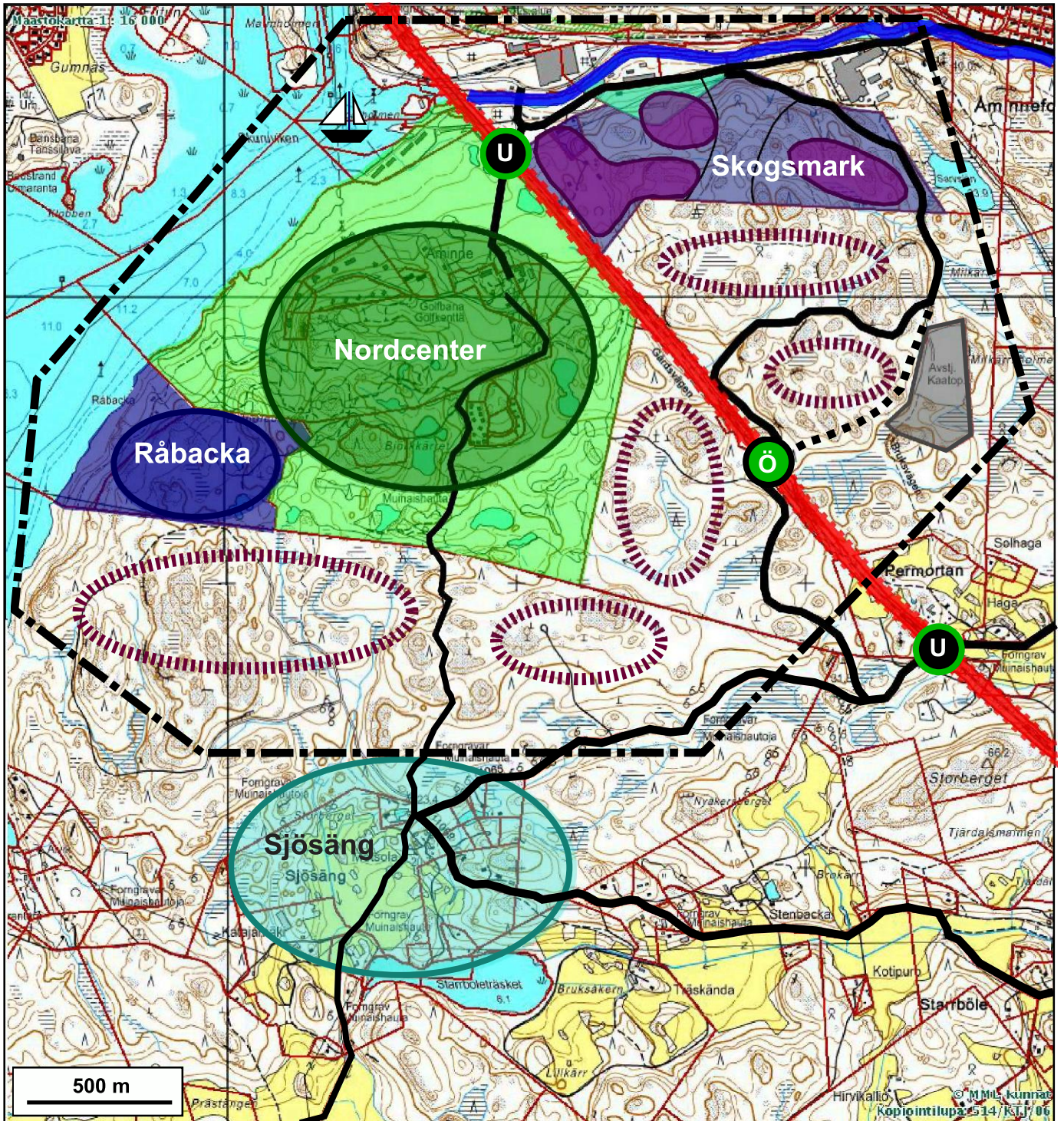
MK 1:10000 / A4

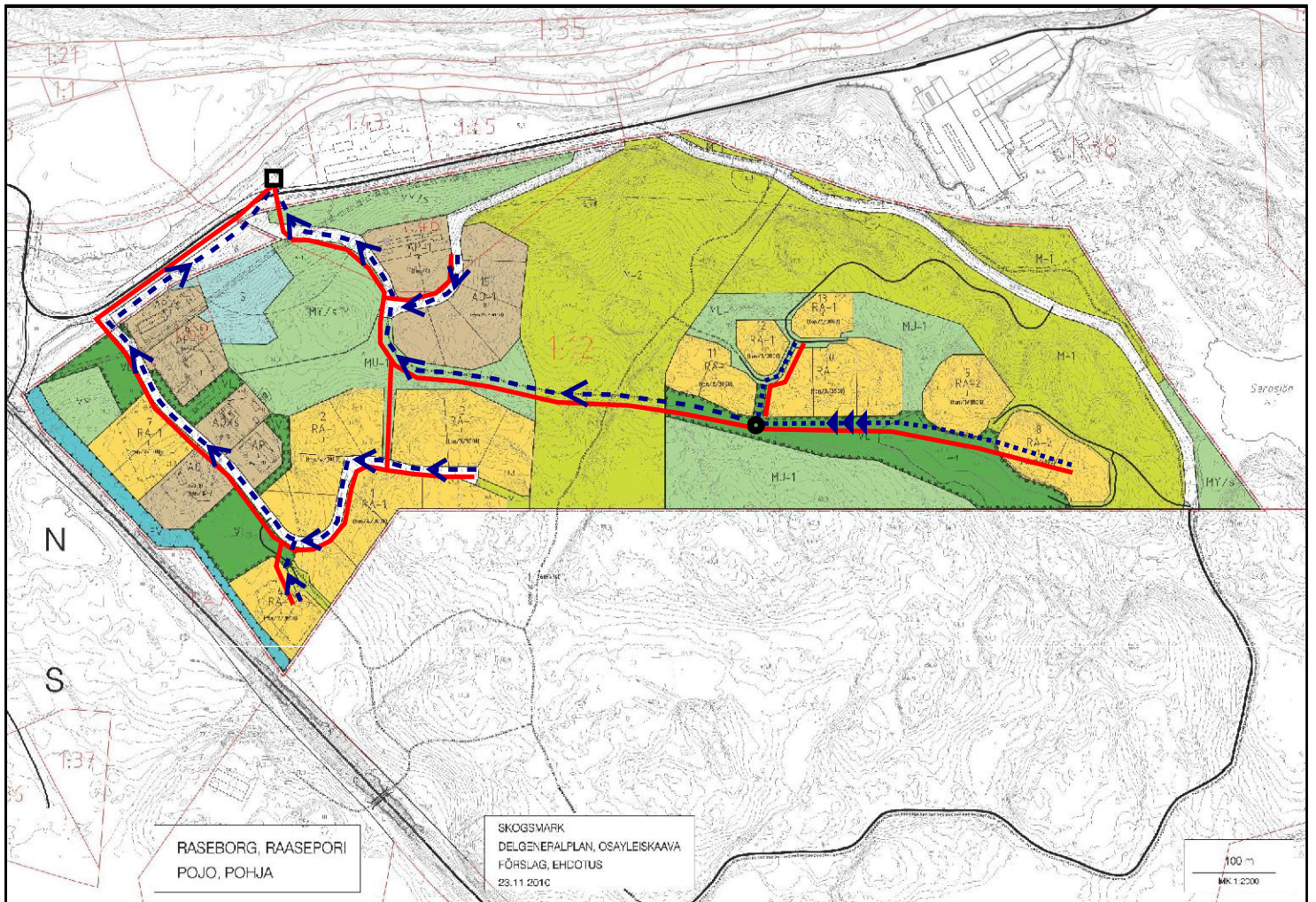










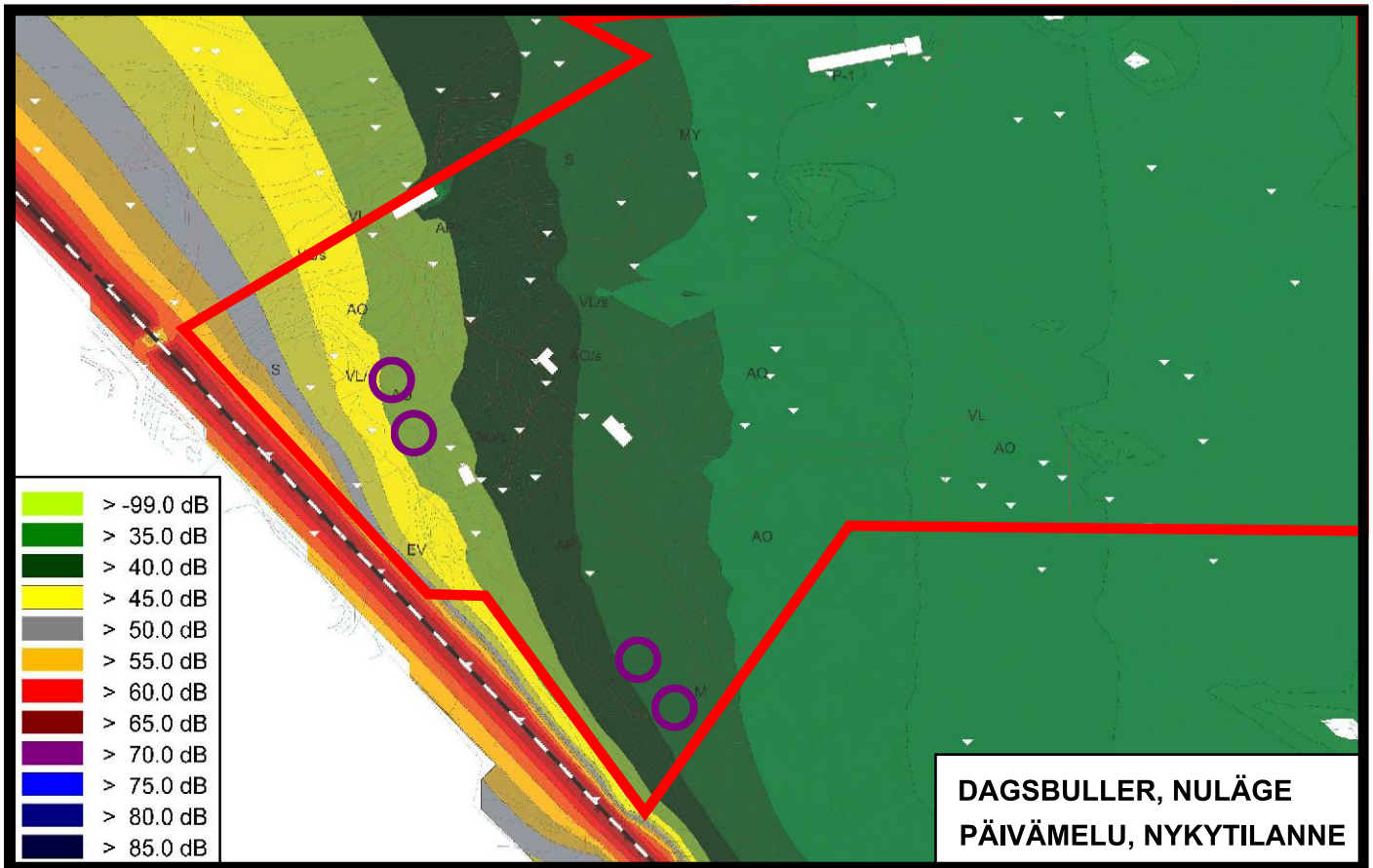






	<p>Jäteveden pumppuasema. Jätevesilinjojen ja vesijohtolinjojen liitoskohta yleiseen verkostoon.</p>
	<p>Viettoviemäri</p>
	<p>Paineviemäri</p>
	<p>Vesijohto</p>

BILAGA / LIITE 7



**BULLERKARTA: RASEBORG, POJO
MELUKARTTA: RAASEPORI, POHJA**

○ = Uudet, lähimpänä rautatietä sijaitsevat asuinrakennukset

