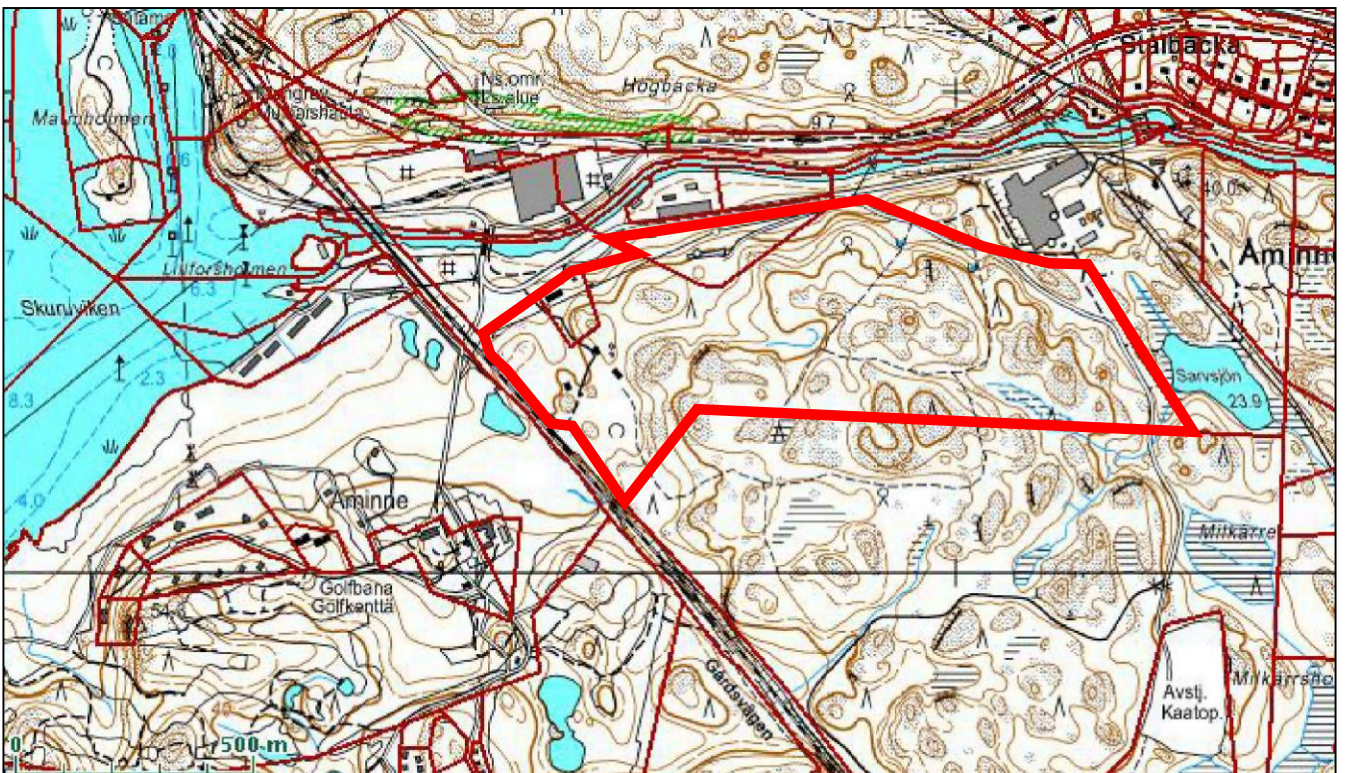


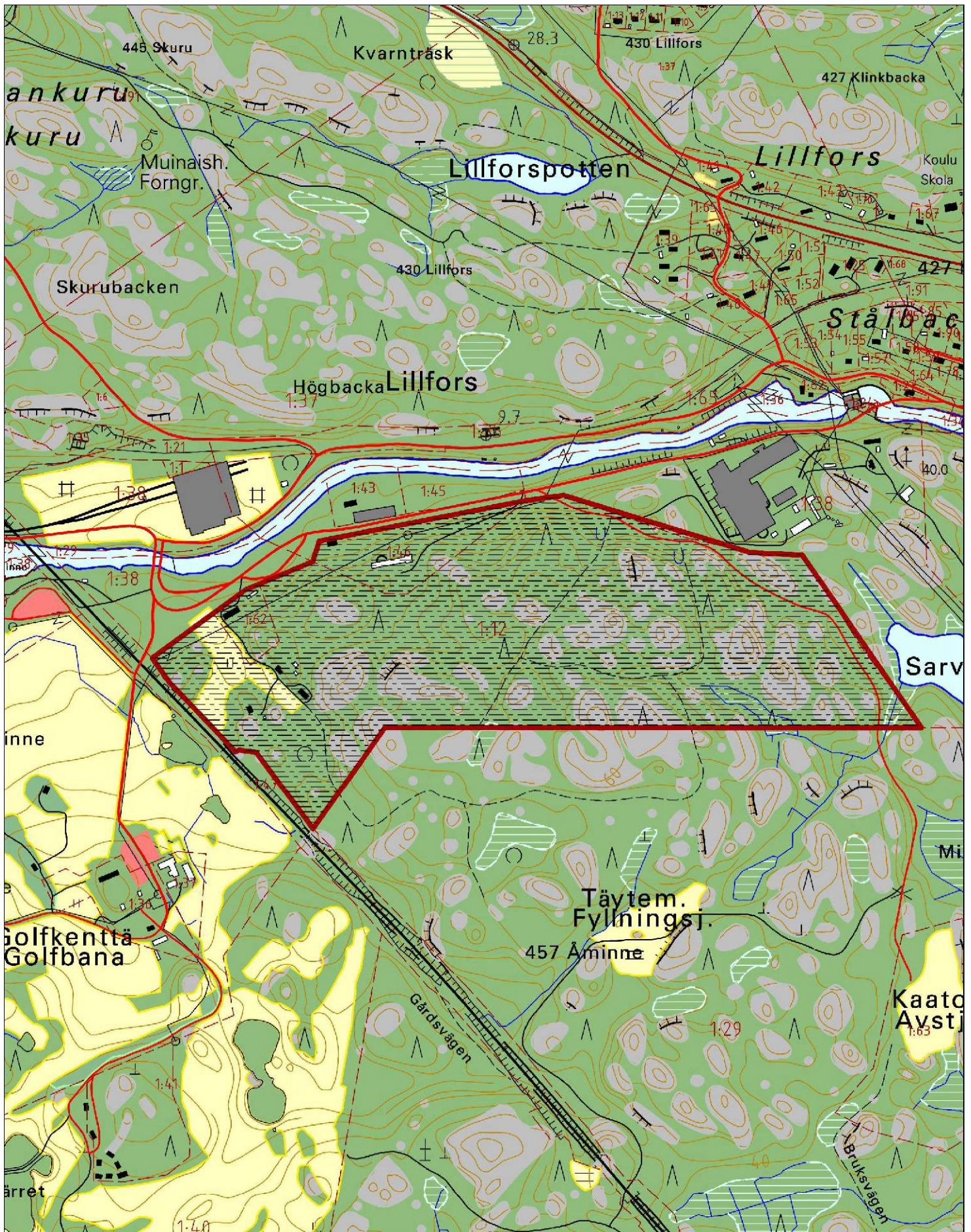
250 m

Opaskartta, (c) Raseborg stad & MML, lupanro 913/MML/07



**BILAGA / LIITE 1A**



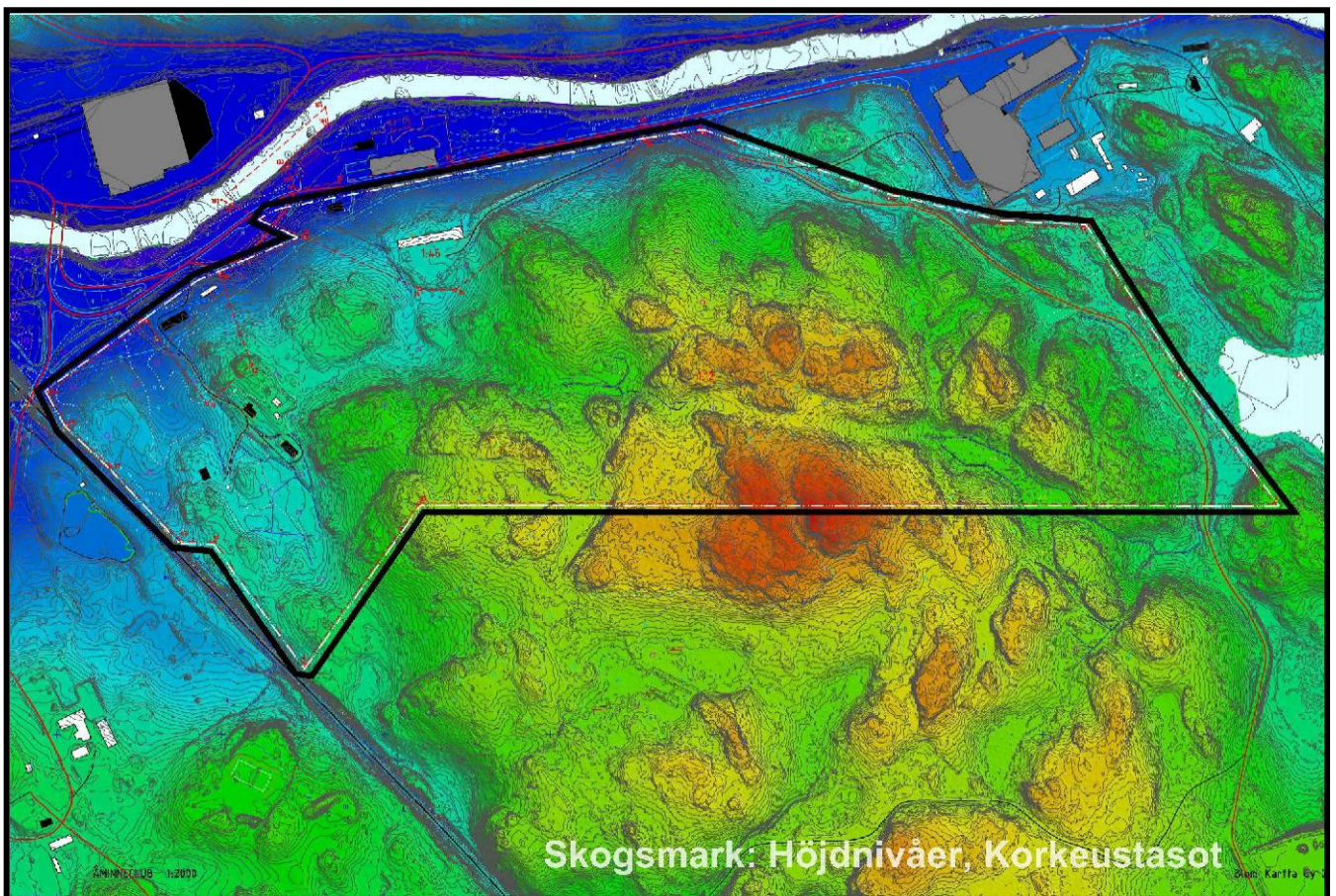
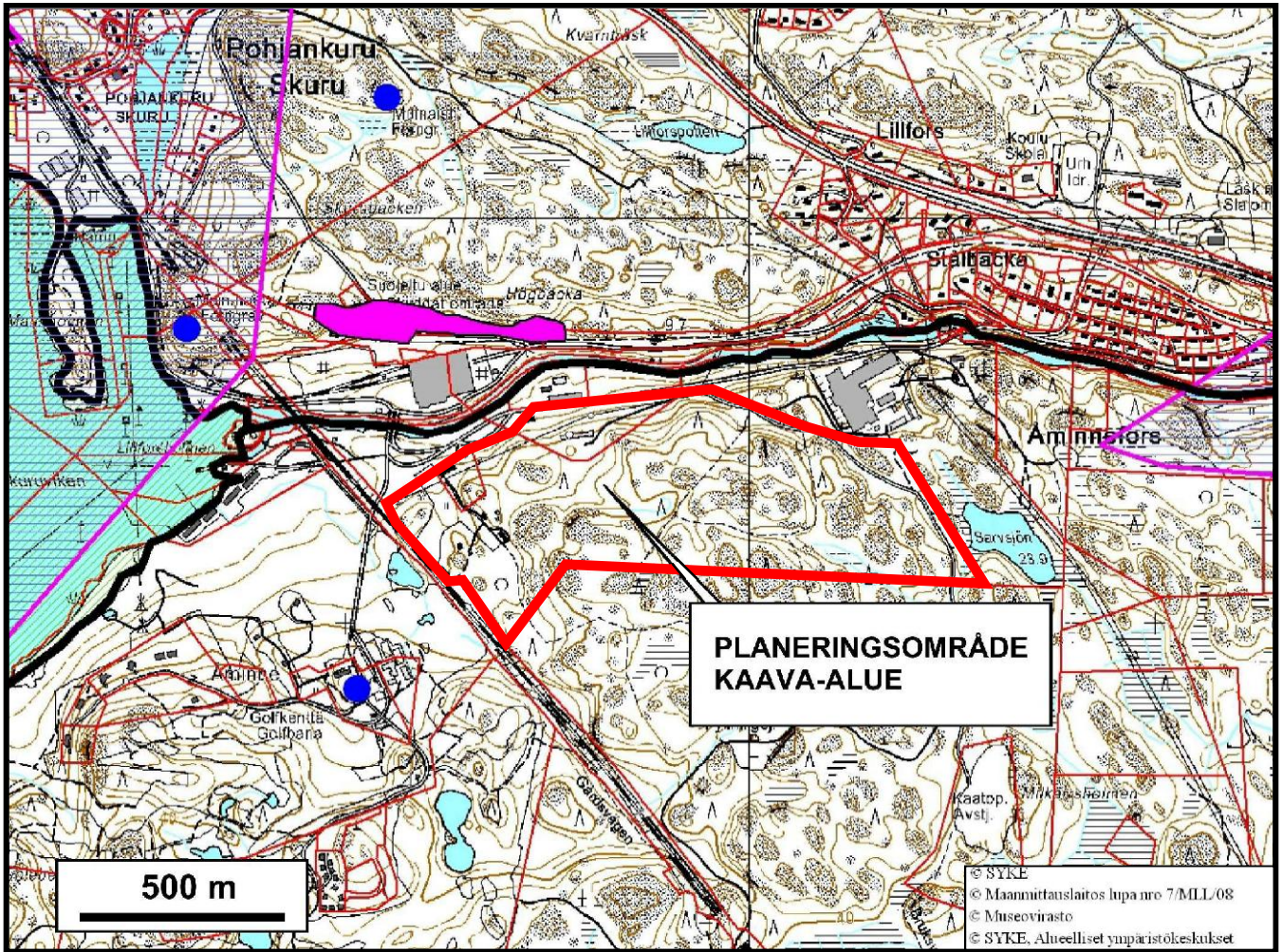


**PLANERINGSOMRÅDE,  
KAAVA-ALUE**

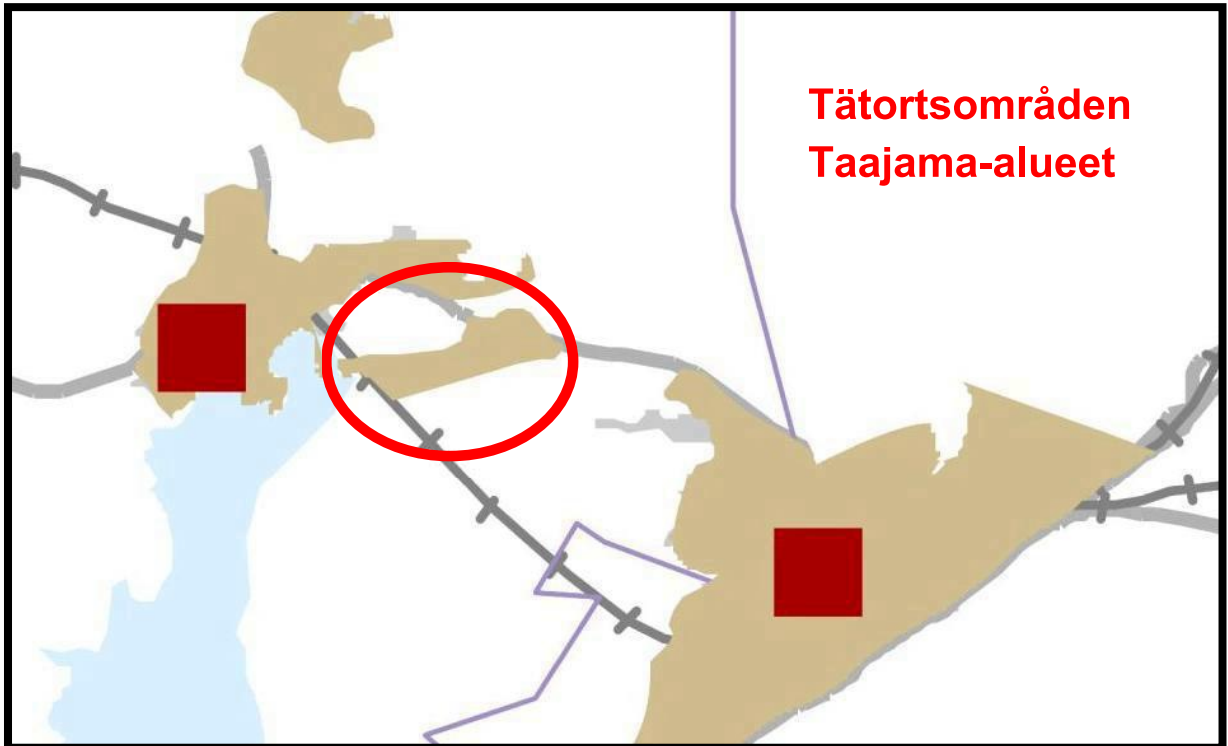
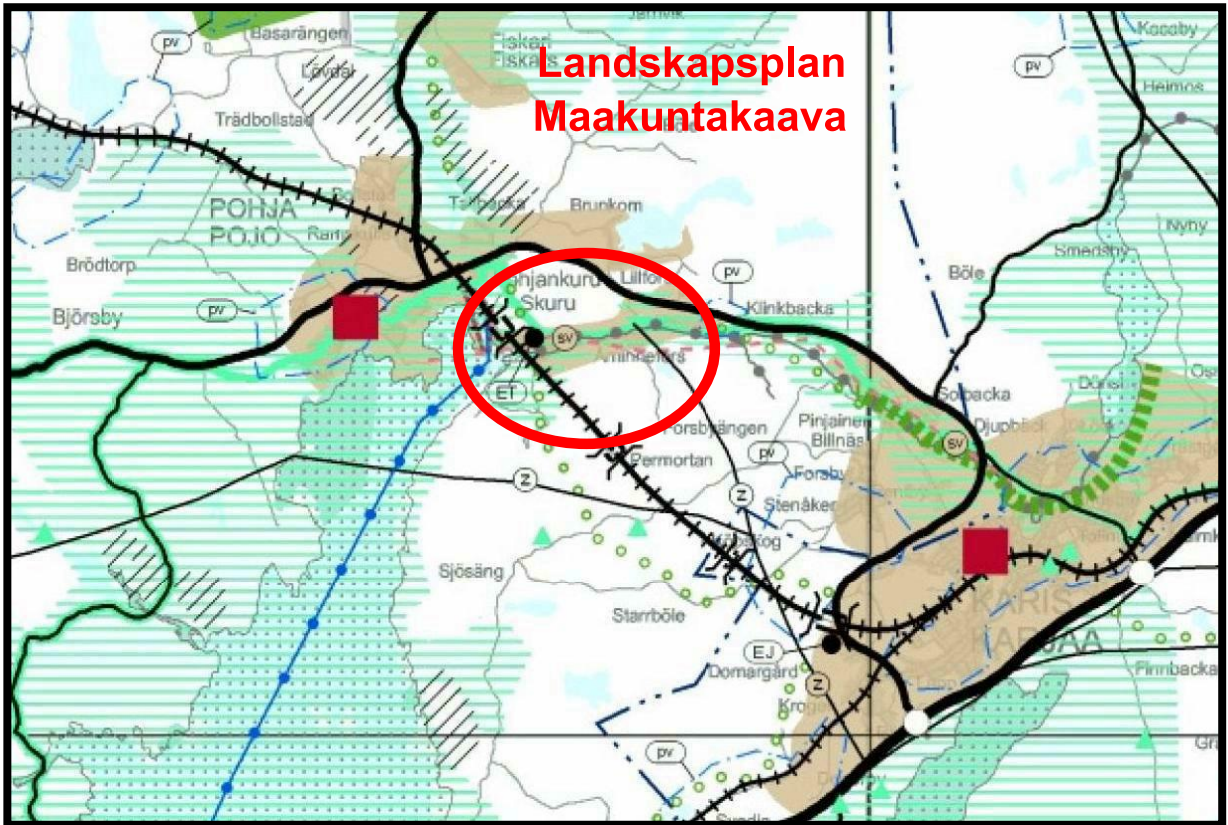
**LÄGE, SIJAINTI  
BILAGA,  
LIITE **1B****

MK 1:10000 / A4

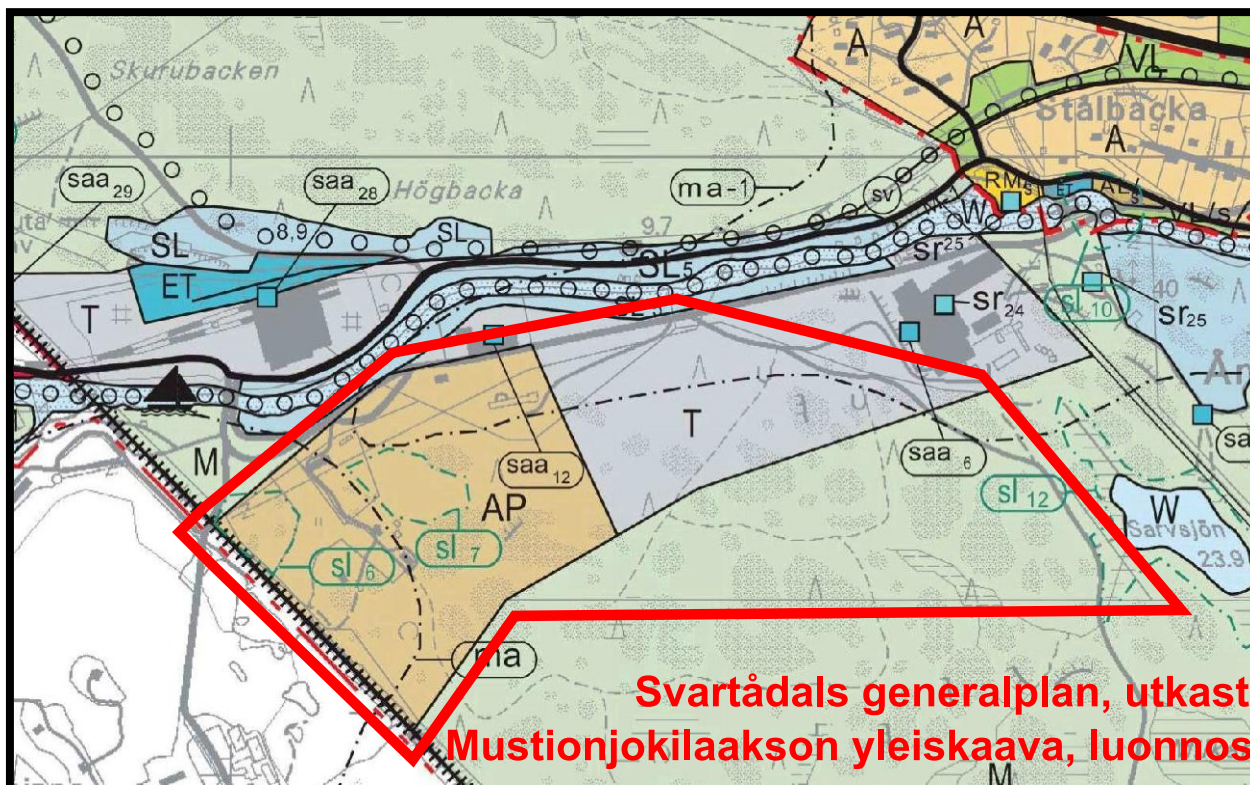
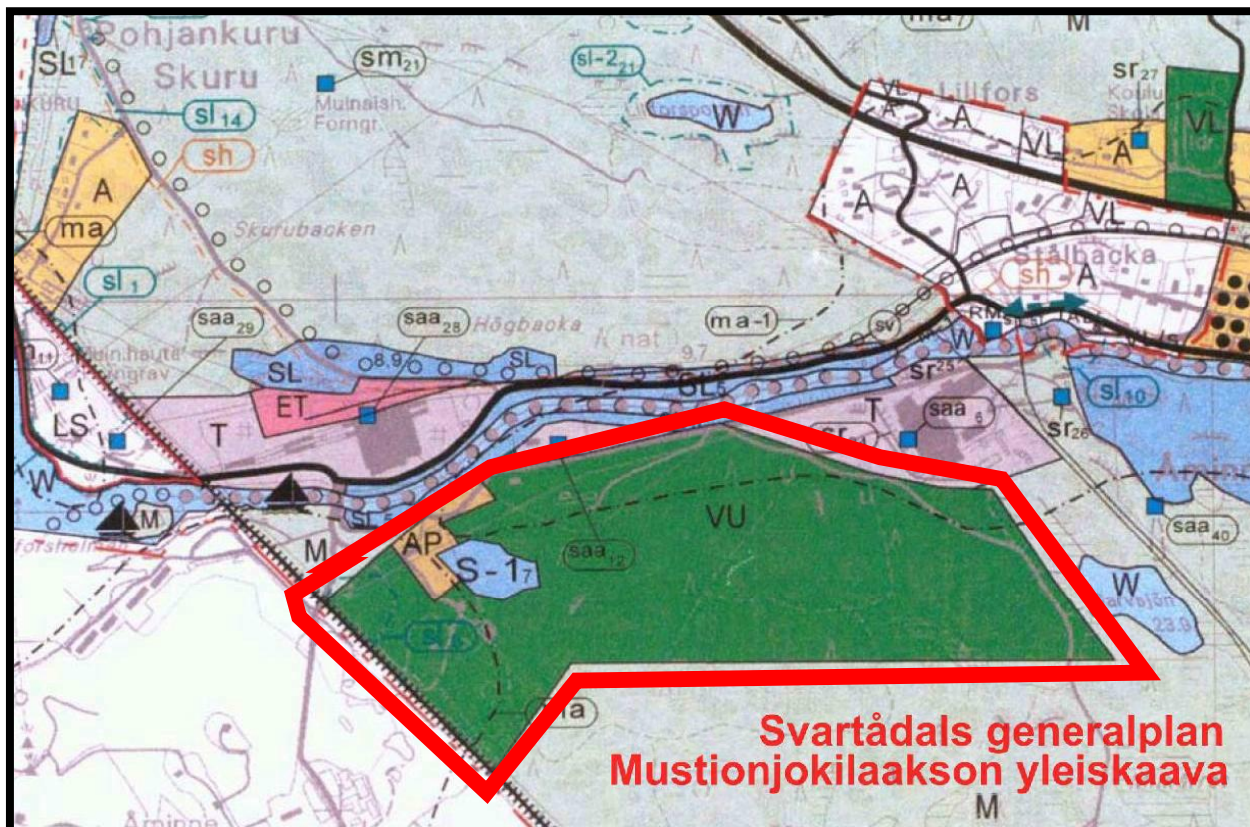




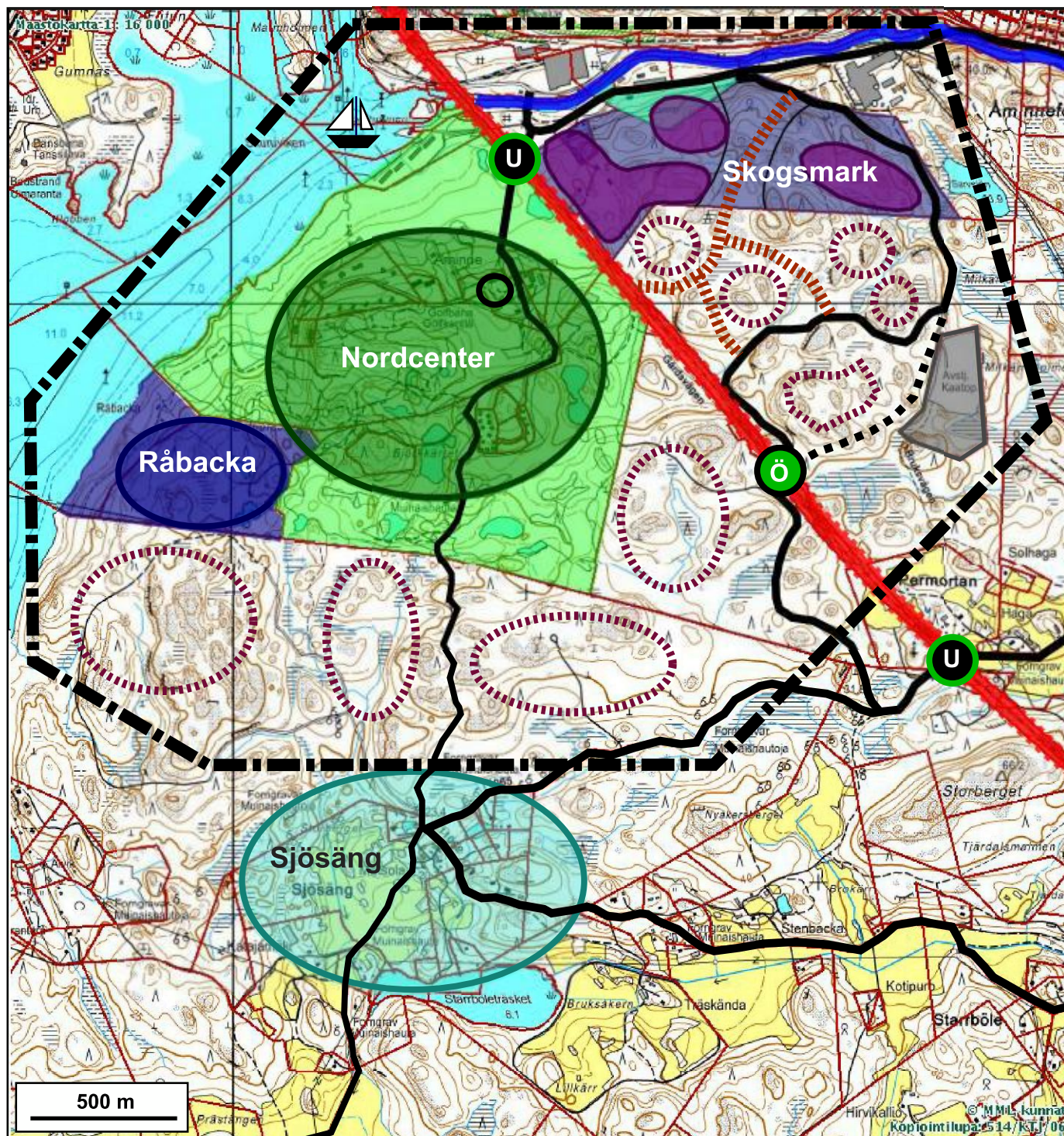























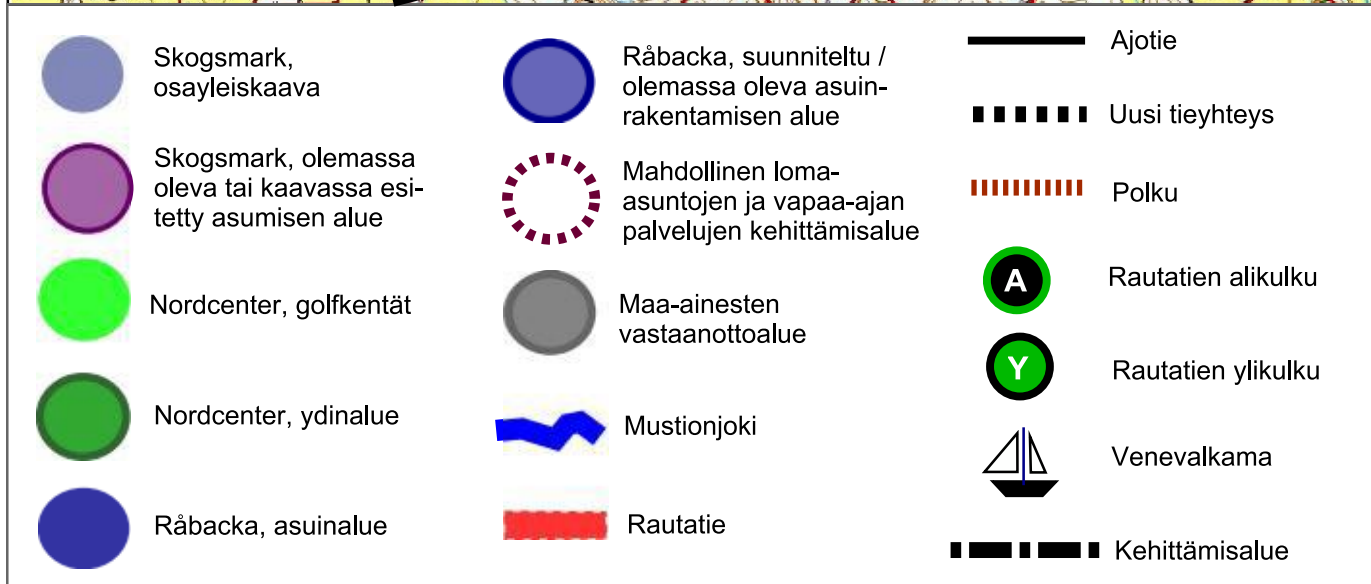
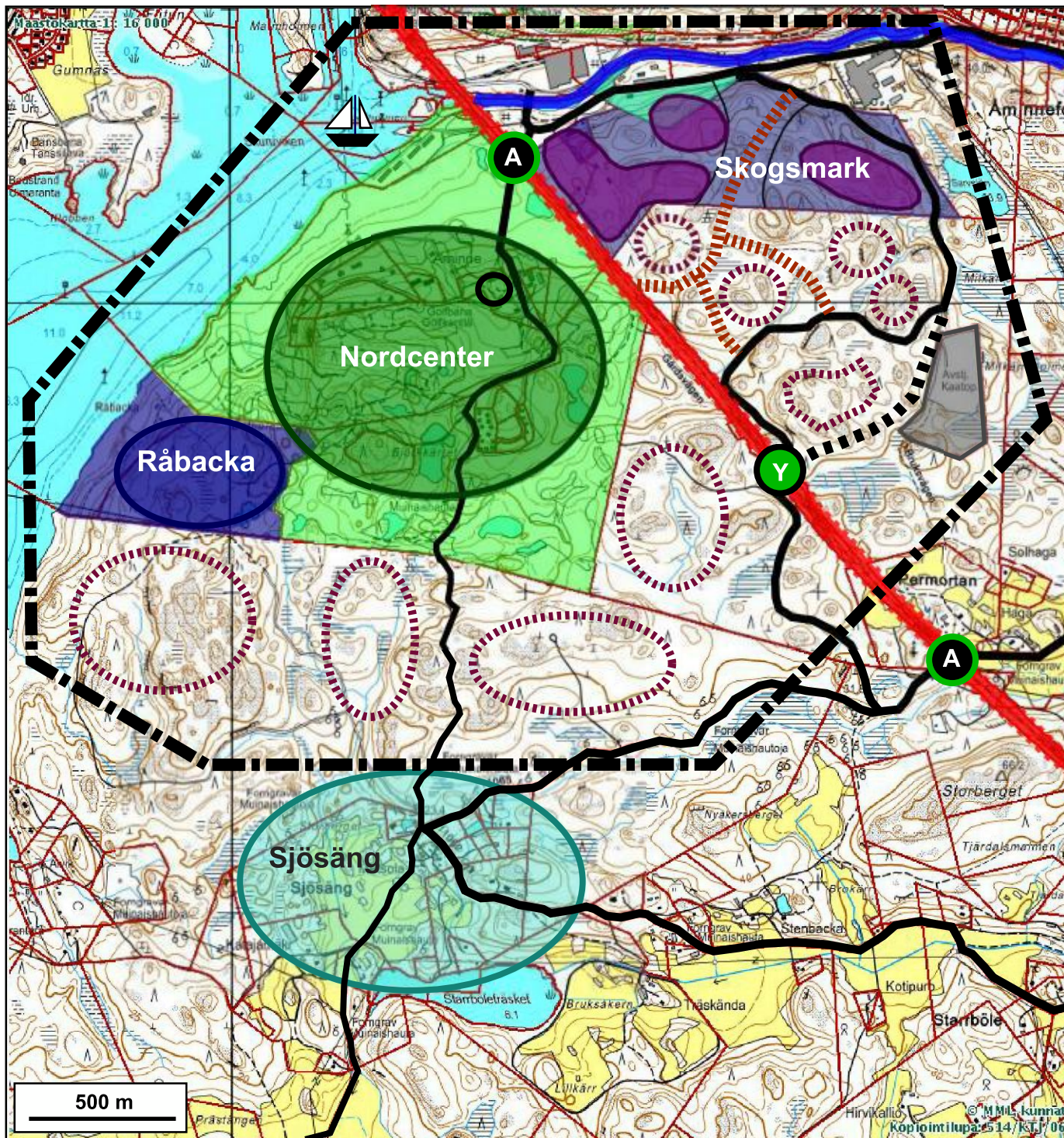




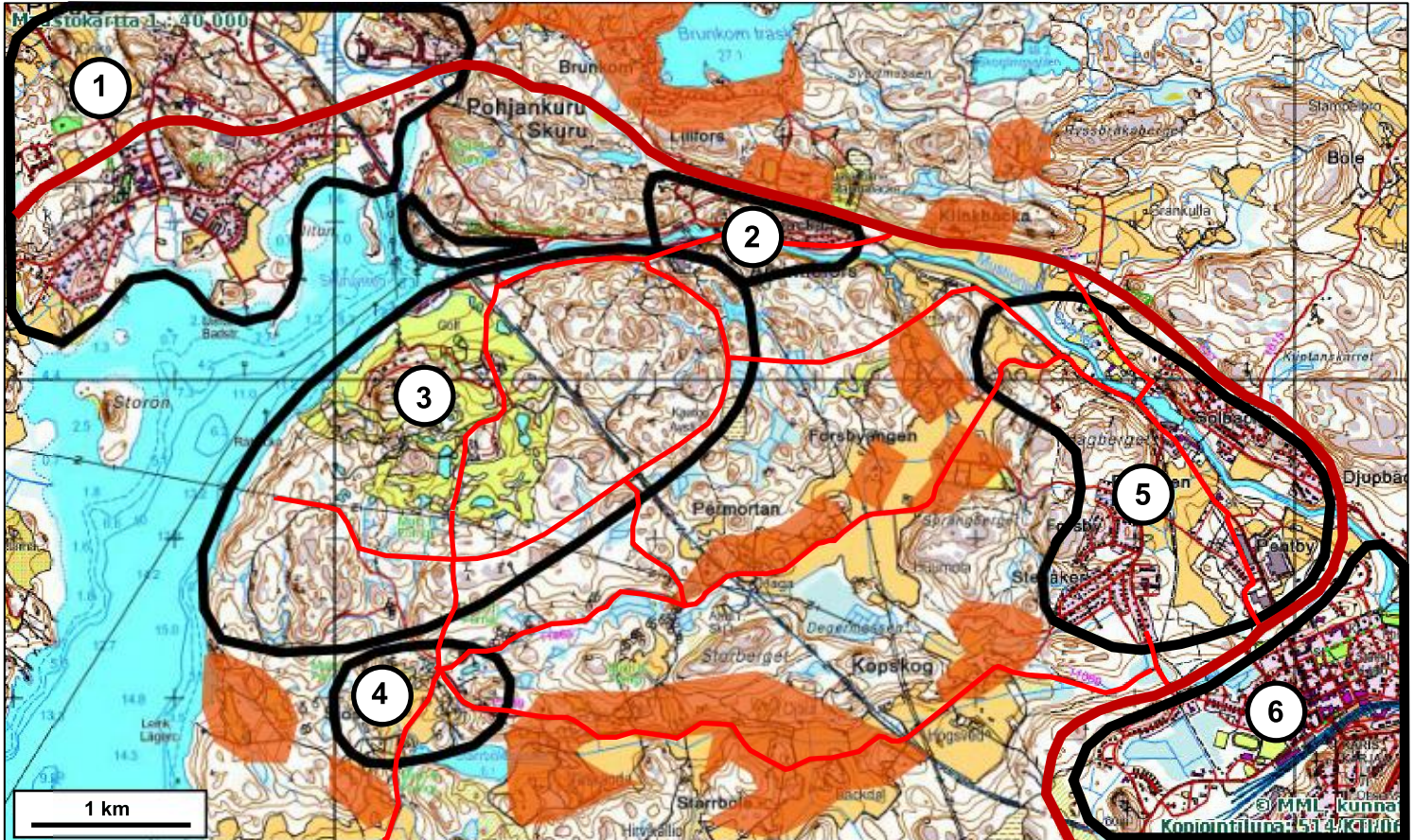


- |   |   |   |   |   |                   |
|---|---|---|---|---|-------------------|
|  | Skogsmark, delgeneralplan   |  | Råbacka, planerat/befintligt område för bostadsbyggande         |  | Väg               |
|  | Skogsmark, befintligt eller i planen föreslaget område för boende |  | Potentiellt utvecklingsområde för fritidsbostäder och -tjänster |  | Ny vägförbindelse |
|  | Nordcenter, golfbanor   |  | Område för mottagning av jordmassor                             |  | Stig              |
|  | Nordcenter, kärnområde  |  | Svartån   |  | Järnvägsunderfart |
|  | Råbacka, bostadsområde  |  | Järnväg   |  | Järnvägsöverfart  |
|   |   |   |   |  | Småbåtshamn       |
|   |   |   |   |  | Utvecklingsområde |









Tätort eller tätare område för boende och service.  
Taajama tai tiiviimpi asumisen ja palvelujen alue.



Område för landsbygdsboende.  
Maaseutuasumisen alue.



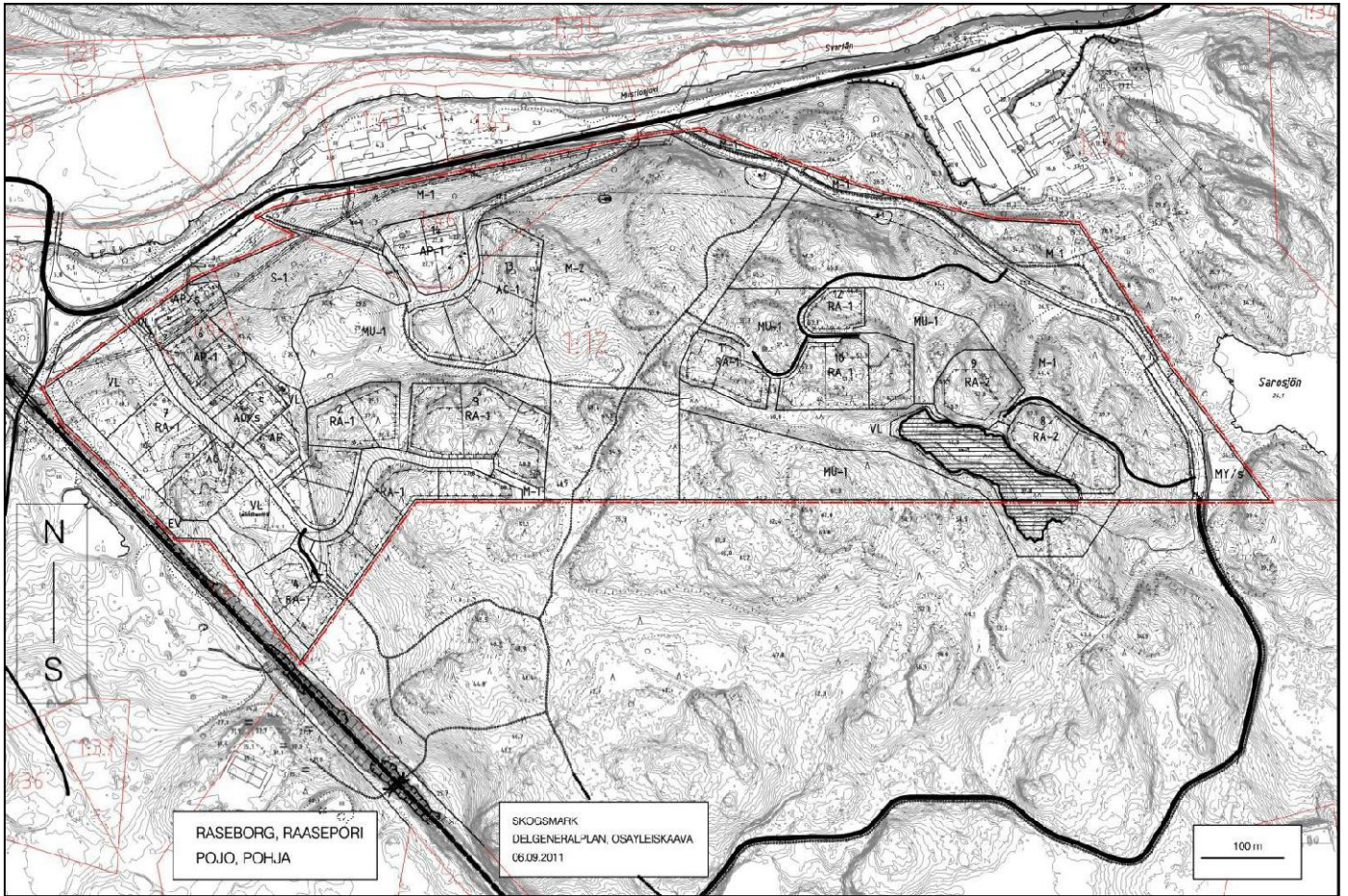
Landsväg.  
Maantie.



Lokal förbindelseväg.  
Paikallinen yhdystie.

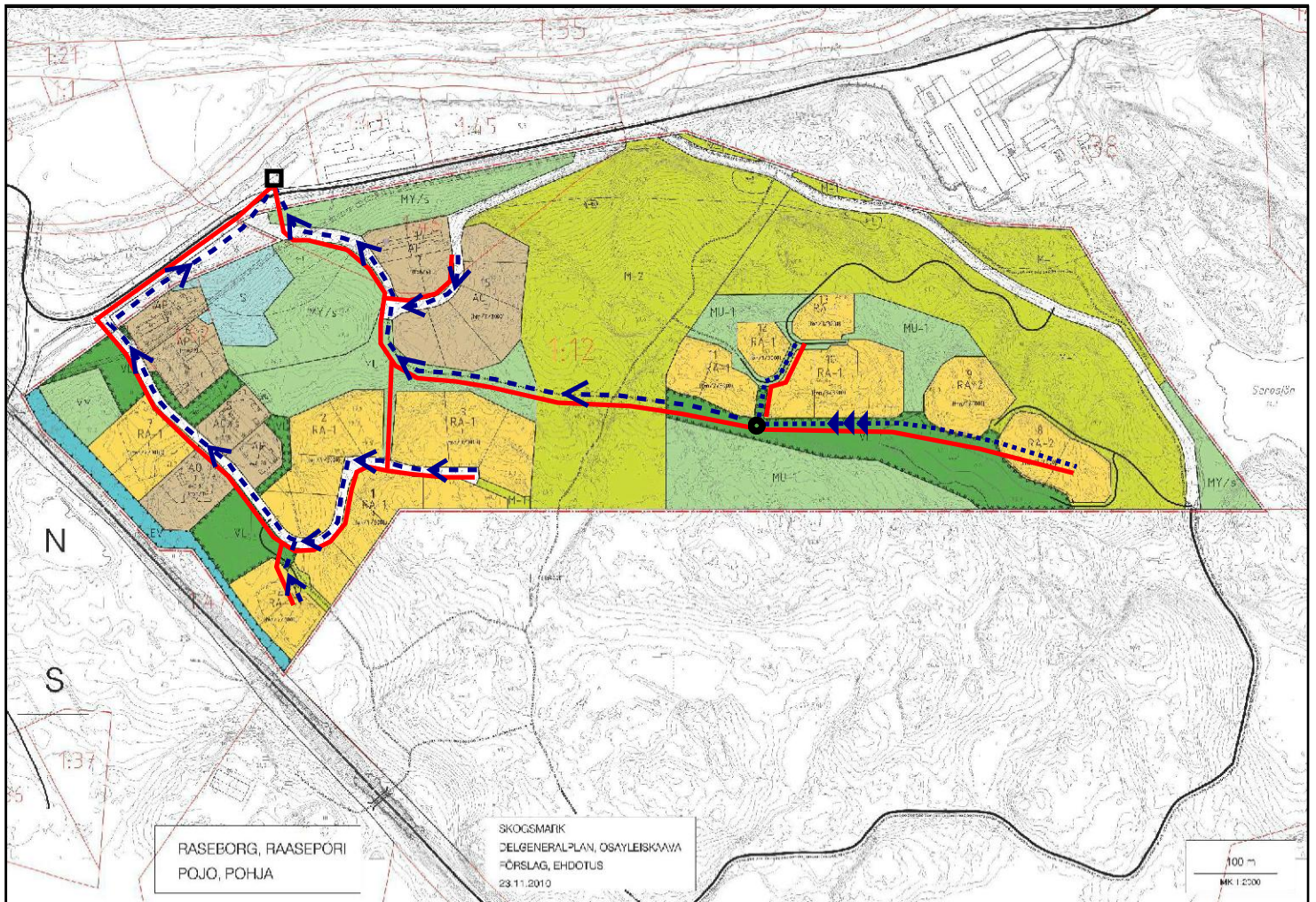
1. Pojo centrum - Pohja keskusta
2. Åminnefors
3. Råbacka / Nordcenter / Skogsmark
4. Sjöäng
5. Billnäs - Pinjainen
6. Karis centrum - Karjaa keskusta





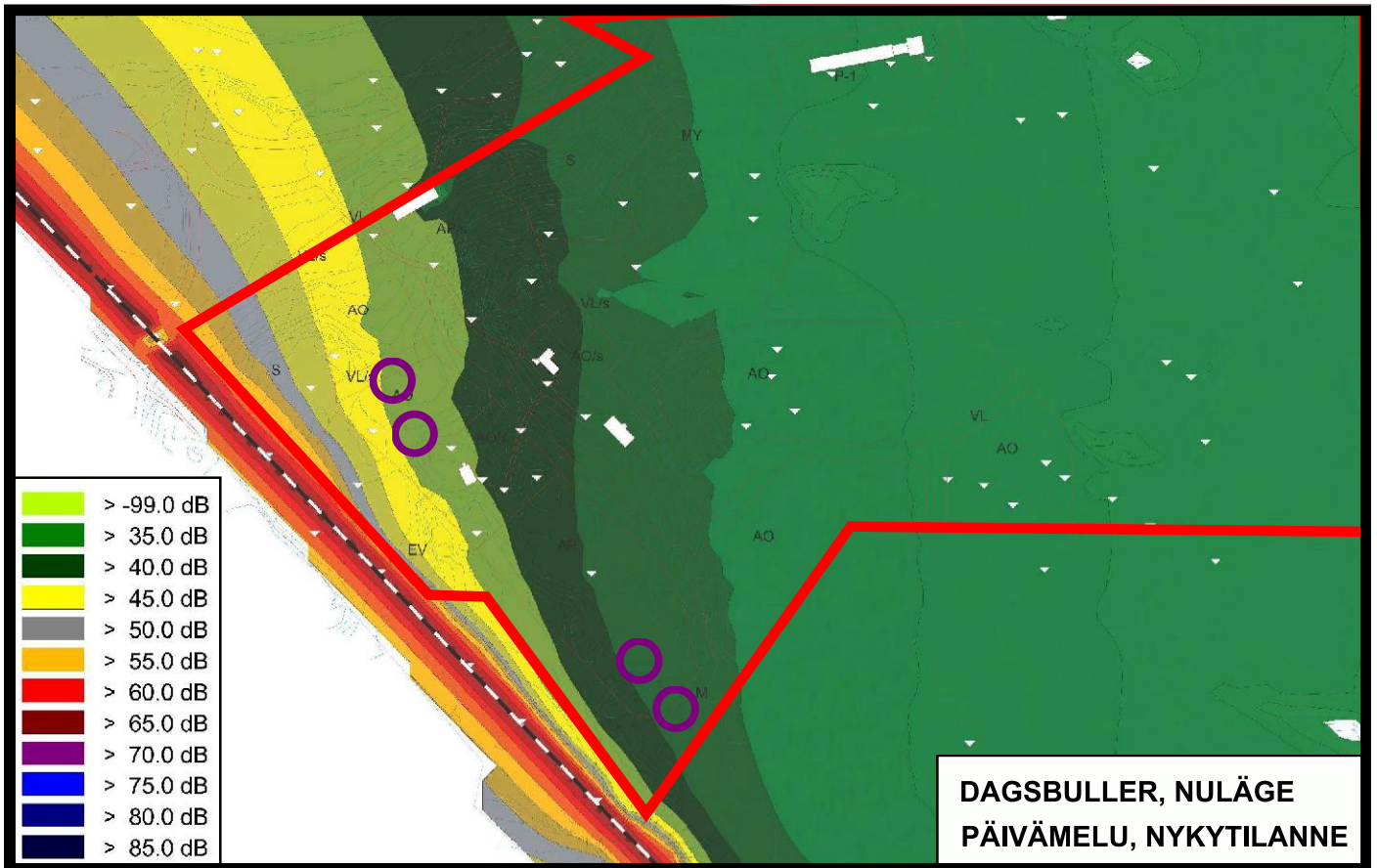
## BILAGA / LIITE 6






|         |   |
|---------|---|
| □       | Jäteveden pumppuasema.<br>Jätevesilinjojen ja vesijohtolinjojen<br>liitoskohta yleiseen verkostoon. |
| - - - < | Viettoviemäri   |
| - - - > | Paineviemäri  |
| —       | Vesijohto   |





**BULLERKARTA: RASEBORG, POJO  
MELUKARTTA: RAASEPORI, POHJA**

 = Uudet, lähimpänä rautatietä sijaitsevat asuinrakennukset

